

*Connect RS-232 to V.35 using any gender and connector variation imaginable.*

## Overview

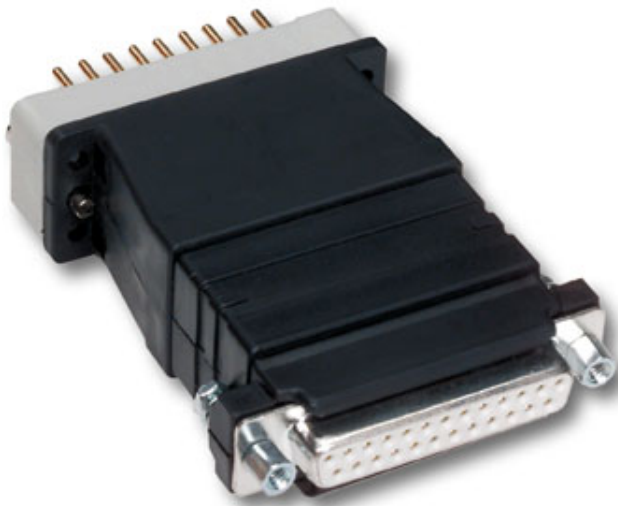
The Model 2020 Series solves one of the most common problems in WAN connectivity-connecting sync RS-232 hardware to sync V.35 hardware. And the Model 2020 series offers many different models to choose from.

The Model 2020N is the perfect solution for converter applications that do not require a built-in cable. It has all the features of the Model 2020 series contained in an ultra-miniature package.



## Features

- Bi-directional RS-232 to V.35 conversion
- Support for data rates to 384 kbps
- DCE/DTE switchable
- All appropriate data, clocking & control signals passed
- Integral connectors (Model 2020N) or equipped with built-in 6 ft (1.8 m) cable
- **Made in the USA** — This Patton equipment is designed by Patton engineers and built in our Gaithersburg, Maryland facility. Patton's American-made manufacturing process delivers high-quality networking solutions with reliability you can trust.



# Ordering

#	Model #	Description	Availability
1	2020F-25F	RS-232(FEM)-V.35(FEM) CONV	Special Order
2	2020F-25M	RS-232(FEM)-V.35(MALE) CONV	Special Order
3	2020F-F	RS-232 F /V.35 F	Special Order
4	2020F-M	RS-232(FEMALE TO V.35 MALE CON	General Availability
5	2020M-25F	RS-232(MALE)-V.35(FEM) CONV	Special Order
6	2020M-25M	RS232(DB25MALE)-V.35(DB25MALE) CONV	Special Order
7	2020M-F	RS-232(MALE)-V.35(FEMALE)CONV	Special Order
8	2020M-M	RS-232(MALE)-V.35(MALE)CONV	Special Order
9	2020NF-F	RS-232(FEMALE) TO V.35(FEMALE)	End of Life-Notice
10	2020NF-M	RS-232 (FEMALE) TO V.35 (MALE)	End of Life-Notice
11	2020NM-F	RS-232 (MALE) TO V.35 (FEMALE)	End of Life-Notice
12	2020NM-M	RS-232 (MALE) TO V.35 (MALE)	End of Life-Notice

## Company (/company/)

- > Contact Us (/company/contact-us.asp)
- > About Patton (/company/about.asp)
- > Jobs (/company/careers/)
- > Capabilities (/products/special/services.asp)
- > Quality & Responsibility (/company/environment/)
- > Legal (/legal/)

### News & Events

- > Press Room/Releases (/press/)
- > Training & Events (/training/)
- > Library/Downloads (/resources/)

## Partners & Resources (/partners/)

- > Partner Programs (/partners/)
- > Resources (/resources/)
- > Blog (https://blog.patton.com)

## Products

### (/products/)

#### Unified Communications

- > VoIP Gateways (/voip-gateway/#products)
- > VoIP Routers (/voip-router/#products)
- > VoIP IADs (/voip-iad/#products)
- > SIP eSBCs (/session-border-controller/#products)
- > VoIP Appliances (/ip-pbx/#products)
- > SS7 Media Gateways (/ss7-gateway/#products)

#### Software and Cloud

- > Virtual SBC (/virtual-sbc/#products)
- > Virtual Access Router (/virtual-access-router/#products)
- > VPN Server (/vpn-server/#products)
- > IPv6 to IPv4 Network Gateway (/network-gateway/#products)
- > Intelligent Edge Orchestration (/intelligent-edge-

#### Connectivity

- > Line Drivers / Short Range Modems (/products/network-connectivity/#11)
- > Fiber Serial DataCom (RS-232/422/530/188C) (/products/network-connectivity/#27)
- > Ethernet Over Fiber (/products/network-connectivity/#23)
- > Multiplexers & Sharing Devices (/products/network-connectivity/#12)
- > Fiber Telecom (T1/E1/PRI, Analog and ISDN) (/products/network-connectivity/#28)
- > Pro AV Live and Media Broadcast Fiber Systems (/products/network-connectivity/#29)
- > SFP (Small Form Pluggable) Modules and Kits (/products/network-connectivity/#30)
- > Fiber Alarming, Notification, Relay and Control

orchestration/#products)(/products/network-  
> NFV & SDN connectivity/#24)  
(/nfv/#products) > Other Network Extenders  
Network Access (/products/network-  
> Ethernet Extenders connectivity/#13)  
(/ethernet- > Defense/Security Fiber  
extender/#products) Communications  
> PoE Products (/products/network-  
(/poe/#products) connectivity/#22)  
> xDSL Products > Baluns  
(/xdsl/#products) (/products/network-  
> Routers connectivity/#3)  
(/router/#products) > Surge Protectors & Opto-  
> Dial-Up Access (/dial- Isolators  
up/#products) (/products/network-  
connectivity/#15)  
Sunset Products > DataTaps, Testers,  
(/products/sunset- Adapters, Rack Kits  
products.asp) (/products/network-  
connectivity/#7)  
> Interface Converters  
(/products/network-  
connectivity/#10)  
> Fiber Rack and Enclosure  
Systems  
(/products/network-  
connectivity/#25)  
> Fiber Repeaters and  
Wavelength Division  
Multiplexers (WDM)  
(/products/network-  
connectivity/#26)  
> Waveguide RF Filters  
(/products/network-  
connectivity/#31)

## **Support & Services (/support/)**

- > Support Home (/support/)
- > Support Portal (/support/#portal)
- > Premium Support (/support/support.asp)
- > Software Upgrades (/support/upgrades/)
- > Warranty Services (/support/support-warranty.asp)
- > Returns & RMAs (/returns/)
- > Manuals (/manuals/)

## Special Projects Group (SPG)

(/products/special)

> SPG Home (/products/special/)

> Services & Capabilities

(/products/special/services.asp)

> Projects (/products/special/projects.asp)

> Facilities (/products/special/facilities.asp)



Select your country

Sales: sales@patton.com (mailto:sales@patton.com) / +1 301 975 1000

Support: support@patton.com (mailto:support@patton.com) / +1 301 975 1007

### Have Us Contact You

Email Address or  Phone Number

Copyright © 2001–2020 Patton Electronics Co., All Rights Reserved.

### Join Our Email List

Email Address

### Connect With Us


Login





(<https://twitter.com/pattonconnect>) (<https://www.linkedin.com/company/electror>)




| [Sitemap \(/company/sitemap.asp\)](/company/sitemap.asp) | [Legal \(/legal/\)](/legal/) | [Privacy Policy \(/legal/privacy.asp\)](/legal/privacy.asp) | [Disclaimer \(/legal/terms-conditions.asp\)](/legal/terms-conditions.asp)

|  (<https://twitter.com/pattonconnect>) 

(<https://www.facebook.com/PattonElectronics>) 

(<https://www.youtube.com/user/pattonelectronicsco>) 

(<https://www.linkedin.com/companies/patton-electronics>) 

(/news.rss)