

[Products \(/products/\)](#) > [Connectivity \(/products/network-connectivity/\)](#) > [Interface Converters \(/products/network-connectivity/#10\)](#) > [WAN, X.21, V.35, RS-232/530 and HSSI Converters \(/products/network-connectivity/#10\)](#) > [Connect-IT 2020](#)
[View Printable \(/products/product_detail.asp?id=140&v=print\)](#)

Connect RS-232 to V.35 using any gender and connector variation imaginable.

Overview

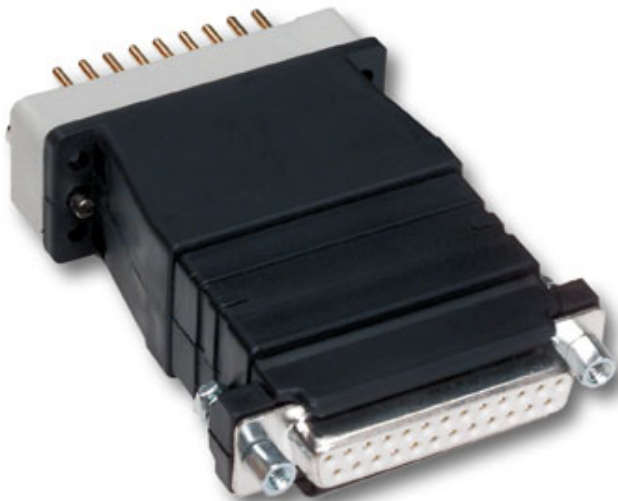
The Model 2020 Series solves one of the most common problems in WAN connectivity-connecting sync RS-232 hardware to sync V.35 hardware. And the Model 2020 series offers many different models to choose from.



The Model 2020N is the perfect solution for converter applications that do not require a built-in cable. It has all the features of the Model 2020 series contained in an ultra-miniature package.

Features

- Bi-directional RS-232 to V.35 conversion
- Support for data rates to 384 kbps
- DCE/DTE switchable
- All appropriate data, clocking & control signals passed
- Integral connectors (Model 2020N) or equipped with built-in 6 ft (1.8 m) cable
- **Made in the USA** — This Patton equipment is designed by Patton engineers and built in our Gaithersburg, Maryland facility. Patton's American-made manufacturing process delivers high-quality networking solutions with reliability you can trust.



Specifications

Format: Synchronous, transparent to protocol, full or half duplex; passes all appropriate control signals

Data Rates: Up to 384 kbps

Clocking: Supplied by the connected devices

Connectors: DB-25 male or fem. on RS-232 side, M/34 male or fem. on V.35 side

Configuration: DTE-to-DCE or DCE-to-DTE, strap selectable

Regulatory Approvals: FCC 15A, UL, CE, EN60950

Ordering

#	Model #	Description	Availability
1	2020F-25F	RS-232(FEM)-V.35(FEM) CONV	Special Order
2	2020F-25M	RS-232(FEM)-V.35(MALE) CONV	Special Order
3	2020F-F	RS-232 F /V.35 F	Special Order
4	2020F-M	RS-232(FEMALE TO V.35 MALE CON	General Availability
5	2020M-25F	RS-232(MALE)-V.35(FEM) CONV	Special Order
6	2020M-25M	RS232(DB25MALE)-V.35(DB25MALE) CONV	Special Order
7	2020M-F	RS-232(MALE)-V.35(FEMALE)CONV	Special Order
8	2020M-M	RS-232(MALE)-V.35(MALE)CONV	Special Order
9	2020NF-F	RS-232(FEMALE) TO V.35(FEMALE)	End of Life-Notice
10	2020NF-M	RS-232 (FEMALE) TO V.35 (MALE)	End of Life-Notice
11	2020NM-F	RS-232 (MALE) TO V.35 (FEMALE)	End of Life-Notice
12	2020NM-M	RS-232 (MALE) TO V.35 (MALE)	End of Life-Notice

Item Number	Item Description	Price
SVC-SmartCare-BH (/support/support.asp)	Premium Support for Business Hours	Contact us (/howtobuy/) for availability and pricing. Contact us (/howtobuy/)
SVC-SmartCare-24/7 (/support/support.asp)	Premium Support, 24 x 7 Coverage	for availability and pricing. Contact us (/howtobuy/)
SVC-SmartAssist-BH (/support/support-professional.asp)	Business Hour Support Services	for availability and pricing. Contact us (/howtobuy/)
SVC-SmartAssist-AH (/support/support-professional.asp)	After Hours Support Services	for availability and pricing. Contact us (/howtobuy/)
SVC-ENHWAR1 (/support/support-warranty.asp)	1 Year Enhanced Warranty	for availability and pricing. Contact us (/howtobuy/)
SVC-ENHWAR2 (/support/support-warranty.asp)	2 Year Enhanced Warranty	for availability and pricing.

SVC-ENHWAR3 (/support/support-warranty.asp)	3 Year Enhanced Warranty	Contact us (/howtobuy/) for availability and pricing.
SVC-ENHWAR4 (/support/support-warranty.asp)	4 Year Enhanced Warranty	Contact us (/howtobuy/) for availability and pricing.
SVC-ENHWAR5 (/support/support-warranty.asp)	5 Year Enhanced Warranty	Contact us (/howtobuy/) for availability and pricing.
SVC-EXTWAR2 (/support/support-warranty.asp)	2 Year Extended Warranty	Contact us (/howtobuy/) for availability and pricing.
SVC-EXTWAR3 (/support/support-warranty.asp)	3 Year Extended Warranty	Contact us (/howtobuy/) for availability and pricing.
SVC-EXTWAR4 (/support/support-warranty.asp)	4 Year Extended Warranty	Contact us (/howtobuy/) for availability and pricing.
SVC-EXTWAR5 (/support/support-warranty.asp)	5 Year Extended Warranty	Contact us (/howtobuy/) for availability and pricing.
SVC-NETENG-HOUR (/support/support-professional.asp)	Network technician hour rate for pre-config services, after hours support, etc.	Contact us (/howtobuy/) for availability and pricing.

Related Products

Model 1000CU2, 1000CU4 & 1000CU8 (/products/product_detail.asp?id=372)
Model 1000R16 (/products/product_detail.asp?id=371)

2, 4, & 8-Slot ClusterBoxes™
16-Slot Mini-Rack

Backgrounders

FiberPlex Capabilities Guide (/backgrounders/FiberPlex_Capabilities_Statement.pdf)

October 6, 2017

Certifications

Declaration of Conformity - Data Communications Devices (/certifications/00109D1-001P.pdf)
Declaration of Conformity - Data Communication Devices: Short Range Modems, Interface Converters, Multiplexer Models (/certifications/02301D1-001H.pdf)

July 16, 2018
February 12, 2015

Data Sheets

Patton Product Life Cycle Color Codes (/datasheet/Life-Cycle-Availability-Codes.pdf)

April 24, 2015

Product & Solution Guides

Enterprise Networking Products Guide (/guides/07MENTNET-PG-lo.pdf)

November 10, 2010

Company (/company/)

- > Contact Us (/company/contact-us.asp)
- > About Patton (/company/about.asp)
- > Jobs (/company/careers/)
- > Capabilities (/products/special/services.asp)
- > Quality & Responsibility (/company/environment/)
- > Legal (/legal/)

News & Events

- > Press Room/Releases (/press/)
- > Training & Events (/training/)
- > Library/Downloads (/resources/)

Partners & Resources (/partners/)

- > Partner Programs (/partners/)
- > Resources (/resources/)
- > Blog (https://blog.patton.com)

Products

(/products/)

Unified Communications

- > VoIP Gateways (/voip-gateway/#products)
- > VoIP Routers (/voip-router/#products)
- > VoIP IADs (/voip-iad/#products)
- > SIP eSBCs (/session-border-controller/#products)
- > VoIP Appliances (/ip-pbx/#products)
- > SS7 Media Gateways (/ss7-gateway/#products)

Software and Cloud

- > Virtual SBC (/virtual-sbc/#products)
- > Virtual Access Router (/virtual-access-router/#products)
- > VPN Server (/vpn-server/#products)
- > IPv6 to IPv4 Network Gateway (/network-gateway/#products)
- > Intelligent Edge Orchestration (/intelligent-edge-orchestration/#products)
- > NFV & SDN (/nfv/#products)

Network Access

- > Ethernet Extenders (/ethernet-extender/#products)
- > PoE Products (/poe/#products)
- > xDSL Products (/xdsl/#products)
- > Routers (/router/#products)

Connectivity

- > Line Drivers / Short Range Modems (/products/network-connectivity/#11)
- > Fiber Serial DataCom (RS-232/422/530/188C) (/products/network-connectivity/#27)
- > Ethernet Over Fiber (/products/network-connectivity/#23)
- > Multiplexers & Sharing Devices (/products/network-connectivity/#12)
- > Fiber Telecom (T1/E1/PRI, Analog and ISDN) (/products/network-connectivity/#28)
- > Pro AV Live and Media Broadcast Fiber Systems (/products/network-connectivity/#29)
- > SFP (Small Form Pluggable) Modules and Kits (/products/network-connectivity/#30)
- > Fiber Alarming, Notification, Relay and Control (/products/network-connectivity/#24)
- > Other Network Extenders (/products/network-connectivity/#13)
- > Defense/Security Fiber Communications (/products/network-connectivity/#22)
- > Baluns (/products/network-connectivity/#3)

> Dial-Up Access (/dial-up/#products)

Sunset Products
(/products/sunset-products.asp).

> Surge Protectors & Opto-Isolators
(/products/network-connectivity/#15)
> DataTaps, Testers, Adapters, Rack Kits
(/products/network-connectivity/#7)
> Interface Converters
(/products/network-connectivity/#10)
> Fiber Rack and Enclosure Systems
(/products/network-connectivity/#25)
> Fiber Repeaters and Wavelength Division Multiplexers (WDM)
(/products/network-connectivity/#26)
> Waveguide RF Filters
(/products/network-connectivity/#31)

Support & Services (/support/)

> Support Home (/support/)
> Support Portal (/support/#portal)
> Premium Support (/support/support.asp)
> Software Upgrades (/support/upgrades/)
> Warranty Services (/support/support-warranty.asp)
> Returns & RMAs (/returns/)
> Manuals (/manuals/)

Special Projects Group (SPG) (/products/special)

> SPG Home (/products/special/)
> Services & Capabilities
(/products/special/services.asp)
> Projects (/products/special/projects.asp)
> Facilities (/products/special/facilities.asp)



Select your country ▼

Sales: sales@patton.com (mailto:sales@patton.com) / +1 301 975 1000
Support: support@patton.com (mailto:support@patton.com) / +1 301 975 1007

Have Us Contact You

sue.chu@icomtechinc. or Phone Number

Submit

Join Our Email List

sue.chu@icomtechinc.com

Subscribe

Connect With Us



(https://twitter.com/pattonconnect)



(https://www.linkedin.com/company/electronics)

Copyright © 2001–2020 Patton Electronics Co., All Rights Reserved.

| [Sitemap \(/company/sitemap.asp\)](/company/sitemap.asp) | [Legal \(/legal/\)](/legal/) | [Privacy Policy \(/legal/privacy.asp\)](/legal/privacy.asp) | [Disclaimer \(/legal/terms-conditions.asp\)](/legal/terms-conditions.asp) | [!\[\]\(d0a1791f26d167e866e44ebbf83efebe_img.jpg\) \(https://twitter.com/pattonconnect\)](https://twitter.com/pattonconnect) [!\[\]\(cb1960474df5b19cdeae2009c7323e63_img.jpg\)](https://www.facebook.com/PattonElectronics)
(https://www.facebook.com/PattonElectronics) [!\[\]\(d08b0fd4d750d53eedcbf354f1702398_img.jpg\)](https://www.youtube.com/user/pattonelectronicSCO)
(https://www.youtube.com/user/pattonelectronicSCO) [!\[\]\(bf750dd6dafb1c24695334b03f7e5ab3_img.jpg\)](https://www.linkedin.com/companies/patton-electronics)
(https://www.linkedin.com/companies/patton-electronics) [!\[\]\(20043b74deb564c339fd03da204ad130_img.jpg\)](/news.rss)
(/news.rss)