

Products (/products/) > Network Access (/products/network-access/) > Ethernet IP Routers (/products/network-access/#8) > IP Routers (/products/network-access/#8) > OnSite 2603

[View Printable \(/products/product_detail.asp?id=182&v=print\)](#)

IP Routers

OnSite 2603 High Speed T1/E1 Bridge, Router and NTU



Patton's IPLink T1/E1 Router is a complete all-in-one network access device which easily connects your LAN to any full or fractional T1/E1 over PPP or frame relay routed or bridged connections.

Overview

The Model 2603 T1/E1 Router is the ideal solution for connecting any small to medium enterprise or remote office to an IP/Internet network using a standard T1/E1 interface.

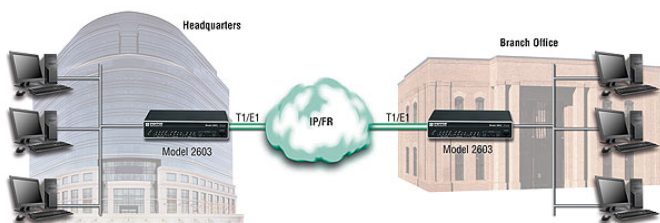
Combining ease-of-use with a full suite of LAN/WAN routing features, the IPLink routers provide selectable bridging or routing functionality along with advanced IP features such as NAT/NAPT, Firewall, and DHCP. A complete set of configurable FR/PPP/IP WAN protocols allow a wide range of choices when connecting branches via common WAN services. The IPLink Routers boast easy installation offering Console/VT-100, Telnet, and HTTP/SNMP management options.

Features

- Standard T1/E1 WAN Interface—RJ-48C and BNC connectors for T1/E1 installations
- PPP and Frame Relay—Versatile WAN options enable deployment into any network
- NAT/NAPT, Firewall, DHCP—Powerful routing features make shared Internet connectivity simple and secure
- 10/100 Ethernet with MDI-X—Easily connect to any computer or LAN—the built-in communication crossover switch eliminates messy configuration cables
- WWW/SNMP Manageable—Built-in VT-100 console port makes setup a snap, and you can use the embedded HTTP/SNMP agent

All IPLink routers come with an auto-sensing full-duplex 10/100Base-T Ethernet port, cross-over switch, and internal power supply. The Model 2603 is equipped with an integrated T1/E1 CSU/DSU for connection to full and fractional T1/E1 services.

Patton's Model 2603 high speed router offers the versatility and reliability demanded for business-class applications at the most affordable price.



Why use our IPLink Series Routers?

Patton's IPLink Gateway Routers deliver all the advanced features for secure, reliable, and high speed Internet data connections. They combine ease-of-use with powerful data routing to make shared Internet connectivity simple and easy.

With NAT support, the IPLink routers offer convenient and economical operation by using a single IP address while the integrated DHCP server automates IP address assignment for connected LAN computers. Security is standard with built-in firewall and violation alerting features that protect the network from would-be intruders.

Patton stands behind our products—we are the only company in the industry offering free configuration support, free technical services, and a minimum one-year warranty on all our products.

to manage the IPLink routers from anywhere in the world.

Specifications

WAN Interface: 2635: V.35-M/34F, 2621: X.21-DB15F, 2603: T1/E1-RJ48C

Ethernet Connection: Single-port 10/100Base-T switch, auto-sensing, full/half-duplex operation, built-in MDI-X

Management: EIA-561 RJ-45 RS-232, VT-100 CLI, TELNET, Embedded WEB/HTTP, SNMP, Logging events: POST, POST errors, line/DSL, PPP/DHCP.

Protocol: IP (RFC 741), TCP (RFC 793), UDP (RFC 768), ICMP (RFC 950), ARP (RFC 826), BCP (RFC 1638). IP Router with RIP (RFC 1058), RIPv2 (RFC 2453), Integrated DHCP Server (RFC 2131). Selectable IP leases and MAC/IP pairings. DHCP relay agent (RFC 2132/RFC 1542) with 8 address pools. DNS Relay. IGMP v1 and v2. Ethernet Bridging. NAT/NAPT with integrated application support, MultiNat with 1:1 mapping, Many:1, Many:Many mapping, NAT Port/IP redirection and mapping.

Security: DoS Detection/protection. Intrusion detection, Logging of session, blocking and intrusion events and Real-Time alerts, Password protected system management with a username/password for console and virtual terminal, Packet filtering firewall for controlled access to and from LAN/WAN. Support for 255 rules in 32 filter sets. 16 individual connection profiles. Access list determining up to 5 hosts/networks which are allowed to access management system SNMP/HTTP/TELNET

Indicators: 12 LEDs: Power, Link, Loss, Loop, Back-Up WAN signals; Link, TX, RX LAN signals

Power Supply: Internal universal 90-260 VAC input or 48 VDC input.

Compliance: FCC Part 15A, CE Mark, EMC Directive 89/336/EEC, Low-Voltage Directive 73/23/EEC, EN60950, EN55022 (CISPR 22). FCC part 68.

Environment: Temperature: 32-122°F (0-50°C); Humidity: 5-90%, non-condensing

Dimensions: 7.3" x 6.6" x 1.62" (185mm x 168mm x 41mm)

Ordering

# Model #	Description	Availability
1 2603/K/E48	T1/E1 (RJ45/BNC) ROUTER WITH EXTERNAL 48VDC POWER	Contact us for Availability
2 2603/K/EUI	T1/E1 (RJ45/BNC) ROUTER WITH 120-220 VAC POWER	General Availability
	+ Accessories	
3 2603/K/UI	T1/E1 (RJ45/BNC) ROUTER WITH INTERNAL 120-220 VAC POWER SUPPLY	End of Life-Notice
	+ Accessories	
4 2603/T/EUI	T1/E1 (RJ45) ROUTER WITH 120-220 VAC POWER	Contact us for Availability
	+ Accessories	
5 2603/T/UI	T1/E1 (RJ45) ROUTER WITH INTERNAL 120-220 VAC POWER SUPPLY	Contact us for Availability
	+ Accessories	

Item Number	Item Description	Price
SVC-SmartCare-BH (/support/support.asp)	Premium Support for Business Hours	Contact us (/howtobuy/) for availability and pricing. Contact us (/howtobuy/)
SVC-SmartCare-24/7 (/support/support.asp)	Premium Support, 24 x 7 Coverage	Contact us (/howtobuy/) for availability and pricing. Contact us (/howtobuy/)
SVC-SmartAssist-BH (/support/support-professional.asp)	Business Hour Support Services	Contact us (/howtobuy/) for availability and pricing. Contact us (/howtobuy/)
SVC-SmartAssist-AH (/support/support-professional.asp)	After Hours Support Services	Contact us (/howtobuy/) for availability and pricing.

SVC-ENHWAR1 (/support/support-warranty.asp)	1 Year Enhanced Warranty	Contact us (/howtobuy/) for availability and pricing.
SVC-ENHWAR2 (/support/support-warranty.asp)	2 Year Enhanced Warranty	Contact us (/howtobuy/) for availability and pricing.
SVC-ENHWAR3 (/support/support-warranty.asp)	3 Year Enhanced Warranty	Contact us (/howtobuy/) for availability and pricing.
SVC-ENHWAR4 (/support/support-warranty.asp)	4 Year Enhanced Warranty	Contact us (/howtobuy/) for availability and pricing.
SVC-ENHWAR5 (/support/support-warranty.asp)	5 Year Enhanced Warranty	Contact us (/howtobuy/) for availability and pricing.
SVC-EXTWAR2 (/support/support-warranty.asp)	2 Year Extended Warranty	Contact us (/howtobuy/) for availability and pricing.
SVC-EXTWAR3 (/support/support-warranty.asp)	3 Year Extended Warranty	Contact us (/howtobuy/) for availability and pricing.
SVC-EXTWAR4 (/support/support-warranty.asp)	4 Year Extended Warranty	Contact us (/howtobuy/) for availability and pricing.
SVC-EXTWAR5 (/support/support-warranty.asp)	5 Year Extended Warranty	Contact us (/howtobuy/) for availability and pricing.

SVC-NETENG-HOUR
(/support/support-
professional.asp)

Network technician hour rate for pre-config services, after hours support, etc.

Contact us
(/howtobuy/) for
availability
and pricing.

Backgrounders

FiberPlex Capabilities Guide
(/backgrounders/FiberPlex_Capabilities_Statement.pdf)

October 6, 2017

Certifications

Patton Devices Not Vulnerable to Meltdown and Spectre Side-Channels Attacks (/certifications/Patton-Meltdown-Spectre-Statement.pdf)

January 4, 2018

Declaration of Conformity - 2603, 2621, 2635, 2701A
(/certifications/03322D1-001D.pdf)

September 26, 2016

Data Sheets

Patton Product Life Cycle Color Codes (/datasheet/Life-Cycle-Availability-Codes.pdf)

April 24, 2015

OnSite Model 2603 Datasheet (/datasheet/2603_datasheet.pdf)

July 28, 2014

OnSite Model 2603 Datasheet (A4 page size) (/datasheet/2603-A4_datasheet.pdf)

July 28, 2014

OnSite Models 2603, 2621, & 2635 Datasheet
(/datasheet/2603_2621_2635_datasheet.pdf)

July 28, 2014

OnSite Models 2603, 2621, & 2635 Datasheet (A4 page size)
(/datasheet/2603_2621_2635-A4_datasheet.pdf)

July 28, 2014

WAN Routers Guide (/datasheet/WAN_Routers_Guide.pdf)

March 3, 2006

User Manuals & Configuration Guides

Model 2603, 2621, & 2635 User Manual (/manuals/2600SER-GSG.pdf)

July 28, 2014

OnSite Model 2603 & 2620 Quick Start Guide (/manuals/2620-QS.pdf)

July 28, 2014

BroadSoft Configuration Guide for SmartNode SmartWare
(/manuals/BroadSoft_PartnerConfigGuide_Patton_SmartNode.pdf)

December 2, 2013

White Papers & Success Stories

The price is right for routers - Computing Canada product review - IPLink Model 2603 (/whitepapers/The_price_is_right_for_routers-Computing_Canada.pdf)

June 23, 2008

Software Upgrades

Model 2603 (/support/upgrades/index.asp?um=2603)

Company (/company/)

- > Contact Us (/company/contact-us.asp)
- > About Patton (/company/about.asp)
- > Jobs (/company/careers/)
- > Capabilities (/products/special/services.asp)
- > Quality & Responsibility (/company/environment/)
- > Legal (/legal/)

News & Events

- > Press Room/Releases (/press/)
- > Training & Events (/training/)
- > Library/Downloads (/resources/)

Partners & Resources

(/partners/)

- > Partner Programs (/partners/)
- > Resources (/resources/)
- > Blog (<https://blog.patton.com>)

Products

(/products/)

Unified Communications

- > VoIP Gateways (/voip-gateway/#products)
- > VoIP Routers (/voip-router/#products)
- > VoIP IADs (/voip-iad/#products)
- > SIP eSBCs (/session-border-controller/#products)
- > VoIP Appliances (/ip-pbx/#products)
- > SS7 Media Gateways (/ss7-gateway/#products)

Software and Cloud

- > Virtual SBC (/virtual-sbc/#products)
- > Virtual Access Router (/virtual-access-router/#products)
- > VPN Server (/vpn-server/#products)
- > IPv6 to IPv4 Network Gateway (/network-gateway/#products)
- > Intelligent Edge Orchestration (/intelligent-edge-orchestration/#products)
- > NFV & SDN (/nfv/#products)

Connectivity

- > Line Drivers / Short Range Modems (/products/network-connectivity/#1)
- > Fiber Serial DataCom (RS-232/422/530/184) (/products/network-connectivity/#2)
- > Ethernet Over Fiber (/products/network-connectivity/#3)
- > Multiplexers & Sharing Devices (/products/network-connectivity/#1)
- > Fiber Telecom (T1/E1/PRI, Anal and ISDN) (/products/network-connectivity/#2)
- > Pro AV Live and Media Broadcast Fiber Systems (/products/network-connectivity/#2)
- > SFP (Small Form-factor Pluggable) Modules and Kits (/products/network-connectivity/#2)

Network Access

- > Ethernet Extenders
(/ethernet-
extender/#products)
- > PoE Products
(/poe/#products)
- > xDSL Products
(/xdsl/#products)
- > Routers
(/router/#products)
- > Dial-Up Access (/dial-
up/#products)

Sunset Products

(/products/sunset-
products.asp).

- connectivity/#3(
- > Fiber Alarming
Notification, Rel
and Control
(/products/netw
connectivity/#2(
- > Other Network
Extenders
(/products/netw
connectivity/#1(
- > Defense/Secur
Fiber
Communication
(/products/netw
connectivity/#2(
- > Baluns
(/products/netw
connectivity/#3)
- > Surge Protecto
Opto-Isolators
(/products/netw
connectivity/#1(
- > DataTaps, Test
Adapters, Rack I
(/products/netw
connectivity/#7)
- > Interface
Converters
(/products/netw
connectivity/#1(
- > Fiber Rack and
Enclosure Syste
(/products/netw
connectivity/#2(
- > Fiber Repeater
and Wavelength
Division
Multiplexers (WI
(/products/netw

connectivity/#26
> Waveguide RF
Filters
(/products/network
connectivity/#36)

Support & Services (/support/)

- > Support Home (/support/)
- > Support Portal (/support/#portal)
- > Premium Support
(/support/support.asp)
- > Software Upgrades
(/support/upgrades/)
- > Warranty Services
(/support/support-warranty.asp)
- > Returns & RMAs (/returns/)
- > Manuals (/manuals/)

Special Projects Group (SPG) (/products/special)

- > SPG Home (/products/special/)
- > Services & Capabilities
(/products/special/services.asp)
- > Projects
(/products/special/projects.asp)
- > Facilities
(/products/special/facilities.asp)



Select your country ▼

Sales: sales@patton.com
(mailto:sales@patton.com) / +1 301 975
1000
Support: support@patton.com
(mailto:support@patton.com) / +1 301 975
1007

Join Our Email List

sue.chu@icomtechinc.com

Subscribe

Have Us Contact You

sue.chu@icomte or Phone Number

Submit

Connect With Us



<https://twitter.com/pattonconnect>




<https://www.linkedin.com/companies/patton-electronics>



<https://www.facebook.com>



Copyright © 2001–2020 Patton Electronics Co.,
All Rights Reserved.

| [Sitemap \(/company/sitemap.asp\)](/company/sitemap.asp) | [Legal \(/legal/\)](/legal/) | [Privacy Policy \(/legal/privacy.asp\)](/legal/privacy.asp) | [Disclaimer \(/legal/terms-conditions.asp\)](/legal/terms-conditions.asp) | 

<https://twitter.com/pattonconnect> 

<https://www.facebook.com/PattonElectronics> 

<https://www.youtube.com/user/pattonelectronicssc>

 <https://www.linkedin.com/companies/patton-electronics>  [\(/news.rss\)](/news.rss)