

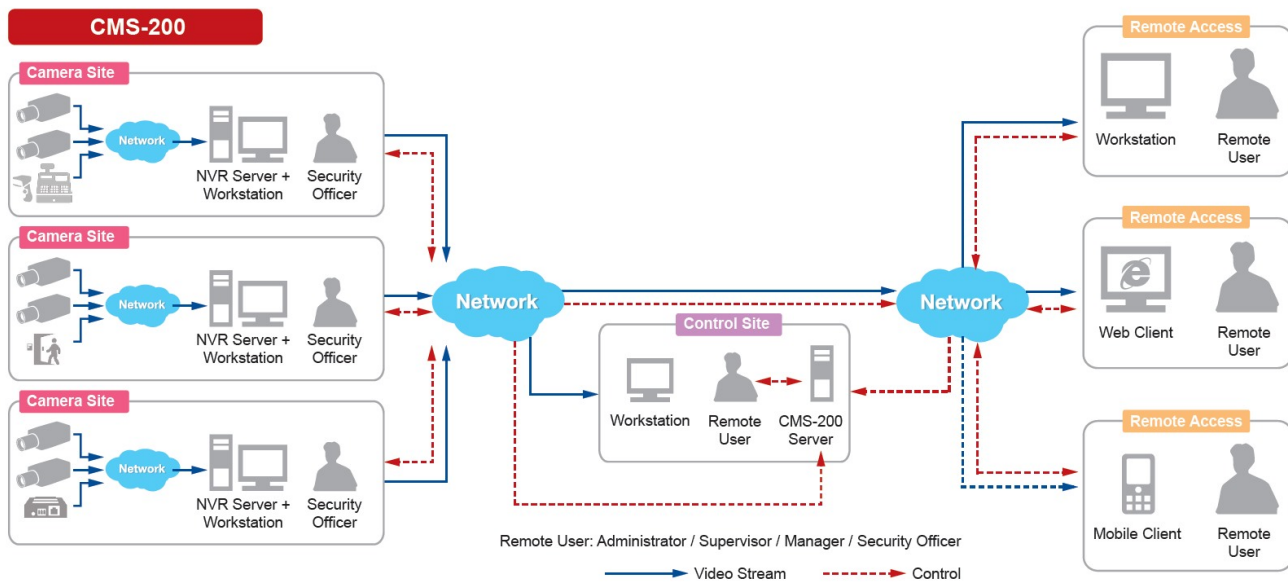
CMS-200

6400-Channel Rackmount Standalone CMS



- Rack Space: 1U
- Maximum Number of Video Devices: 6400
- Free License: 200
- Event trigger, response and notification
- Workstation, Web Client, Mobile Client
- Location-based management with e-Map

► Solution Diagram



► Specifications

Device

Product Type	Standalone CMS
--------------	----------------

Maximum Resolution	Support all ACTi cameras in all resolutions
Maximum Number of Video Devices	6400
Maximum Number of Clients	Local: 1, Remote: 5

Hardware

CPU	Intel Core i7-4770S
RAM	8GB

License

License required	Yes
Free License	200

Live View

Display Layout Mode	1, 4, 5, 6, 8, 9, 10, 12, 16, 18, 24, 25, 35, 36, 48, 49, 64, Custom
Fisheye Dewarping	Yes
Maximum display layout	64
Local Live View performance	Please check "Standalone NVR Performance Validator" (http://www.acti.com/SANVRPerformance)
Digital Zoom	Yes
Event Status	Display event status upon alarm or upon connection loss or recovery between server and client or when the allocated disk space is full
Instant Playback	Instant Playback in live view window

Map

e-Map	Yes
Layout	Area maps with camera icons, small live view windows, view linker, source linker, event trigger
Setup	e-Map image upload, camera positioning, vision angle and pointed direction of camera, view positioning, source positioning, extended devices for Point-of-sale (POS), Access Control, Network I/O, Car Park
PTZ Mode	Mouse PTZ mode to control e-Map video streams

PTZ

PTZ Control	PTZ Control, Speed Control
Joystick	USB based joystick supported

Video

Compression	H.265, H.264, MPEG-4, MJPEG
-------------	-----------------------------

Audio

Audio Type	2-way, Mic-in, Line-out
------------	-------------------------

Network

Network Protocol & Service	IPv4/v6, TCP, UDP, DHCP Client, HTTP, DNS, NTP, RTP, RTSP, SMTP, FTP, ICMP, ARP, UPnP, LDAP (client)
Ethernet Port	Total ports: 2 port(s) Non-PoE: 2 port(s), Ethernet (1000 Base-T), RJ-45 connector

Recording

Manual Recording	Yes
Dual Stream Management	Yes

Search & Playback

Playback Control	Continuous forward and backward playback with speeds 1x/2x/4x/8x/16x or frame-by-frame, pause, stop
Synchronized Playback	9 channels (Local), 64 channels (Remote)
Smart Search	Smart search of recorded video by Motion Detection and Tamper

Event

Event Trigger	Source loss and recovery, Schedule service start and stop, Disk full, Disk not found, Disk is available, Video motion detection, Passive IR sensor, External device through digital input, Video loss, Video Recovery, Network loss and recovery, Point-of-sale (POS) status, Network I/O status, Access Control status,
Event Response	NVR:, Play alert sound, Execute system command to activate other programs, E-mail notification with snapshots, Device:, Pop-up window with live video, Switch to hotspot window, Switch to customize view, Play alert sound, Send video to TV Wall server

System

Permission control	Unlimited number of users, Active Directory, Customizable permissions for user groups, Playback password protected, Password validity period
Client PC Operating System	Windows 7 SP1, Windows 8.1, Windows 10, Windows Server 2008 R2 SP1, Windows Server 2012 R2, Windows Server 2016
Server Operating System	Windows 7 Embedded
Mobile Client Program	Mobile device application (ACTi Mobile Client) supports Live View, PTZ Control, Event/time based search and playback, iPad, Android device
USB	2-Port USB 2.0, 2-Port USB 3.0
Language	Multi-Language

Integration

Unified Solution	Fully compatible with ACTi cameras, encoders, central management system and TV wall
GPS Position	Manual setting
ONVIF Compliant	Yes, Profile S
Web Browser	IE 11 (Please verify that your computer meets the minimum system requirements for Internet Explorer from Microsoft website.)
Third-party Integration	Point of Sale (POS), Access Control, Network I/O, Parking Management Station (PMS), (Various optional integrations requiring additional license)

Storage

System Drive	SSD, 128GB
Storage Bay	SATA, Max. 1 Disk(s) (without storage disks)
HDD Size	2.5"

Interface

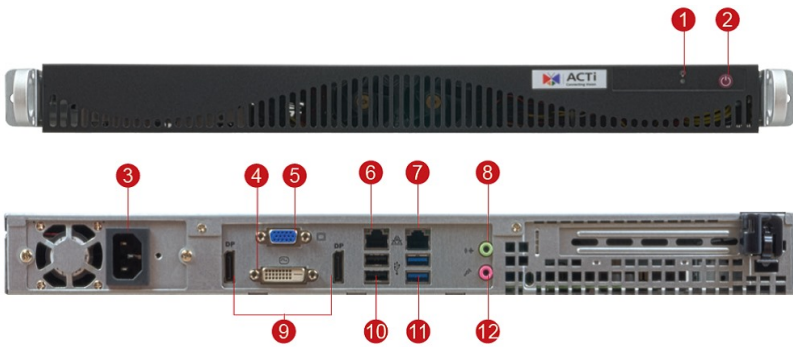
External Storage Interface	USB
Local Access	USB keyboard & mouse

Local Display Interface	DVI x 1, VGA x 1, Display Port x 2,
-------------------------	-------------------------------------

General

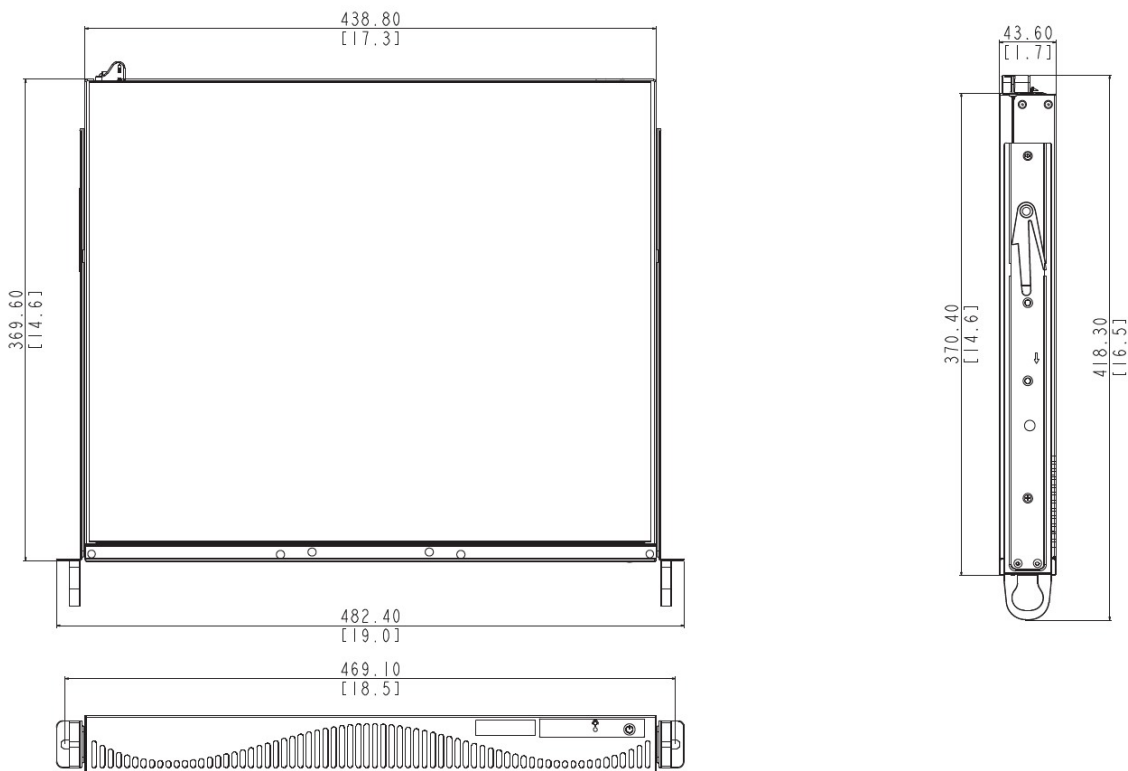
Power Source	AC 100-240V
Weight	6340g (13.98lb)
Dimensions	Rack Space: 1U (W x H x D): 482mm x 43.6mm x 418.3mm (19" x 1.7" x 16.5")
Bundled Accessories	Power cord
Mount Type	Rackmount rails(19", 26")
Fan	Yes
Operating Temperature	0°C ~ 40°C (32°F ~ 104°F)
Operating Humidity	10% - 85% RH
Remote Access	Workstation, Web Client, Mobile Client
Approvals	CE, FCC, UL (for built-in power adapter)
Warranty	3 Year(s)

► Photo Indication



- 1 Power Switch
- 2 Power LED
- 3 AC Power Input
- 4 DVI-D Port
- 5 VGA Port
- 6 LAN 1 Port
- 7 LAN 2 Port
- 8 Line-Out Port
- 9 Display Port
- 10 USB 2.0 Ports
- 11 USB 3.0 Port
- 12 Mic-In Port

► Dimension Diagram



Unit: mm [inch]

▶ Ordering Information

LCMS2000

The license is for channel to work on CMS 2. The number of add-on channels supported: 1-6398. Price listed is for single channel add-on license. CMS 2: The Central Management System managing unlimited NVR servers, providing Live view and Playback up to 64 channels; Smart Search; Export video; Event management; e-Map; free license for 2-channel ACTi NVR servers included.

▶ Related Products

Mounting Accessories - Standalone NVR Mount

PMAX-1202



19" Rackmount Rails for CMS-200, ENR-190, ENR-420, ENR-421, LPR-120

PMAX-1203



26" Rackmount Rails for CMS-200, ENR-190, ENR-420, ENR-421, LPR-120

Note: Some mounting accessories may need additional accessories for installation. Please check www.acti.com/mountingselector for more information.