

IWS PAC Series



IWS-2201-CE7
IWS-4201-CE7
IWS-6201-CE7

Features

- InduSoft Runtime Inside
- Support Modbus, OPC, TCP/IP Client/Server
- DCON Driver for ICP DAS I/O modules provided
- Makes connectivity for the "internet of things" and mobile devices easily.
- 7"/10.4"/15" LCD
- Resolution: 800 x 480 ~ 1024 x 768
- Resistive Touch Panel
- AM335x (1 GHz or 720 MHz) CPU
- Windows CE 7.0
- NEMA 4/IP65 Compliant Front Panel
- Operating Temperature: -10 ~ +60°C



Introduction

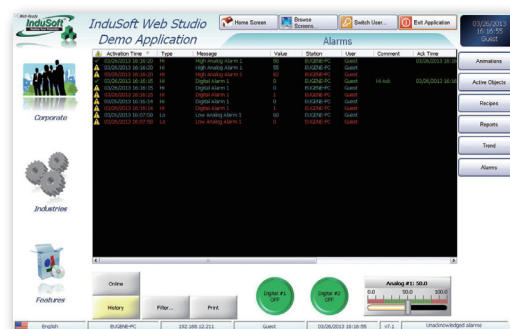
The IWS PAC series is the new generation WinCE 7.0 based InduSoft PAC of ICP DAS. It combines a RISC-based CPU board, TFT LCD touch screen to create a ruggedized, flat panel computer perfect for a variety of control and HMI applications. It provides a variety of connectives including Gigabit Ethernet, USB port, RS-232 and RS-485. The operating system is pre-installed in the on-board Flash memory. Remote I/O expansion is available using our Ethernet I/O modules, RS-485 I/O modules, Wi-Fi and ZigBee wireless I/O modules. Designed for panel mount installation, the front panel is NEMA 4/IP65 rated and can withstand sprayed water, humidity and extreme dust. Designed to operate over a wide -10°C ~ 60°C ambient temperature range, the fanless design offers the ultimate in reliability with no moving parts.

InduSoft Features



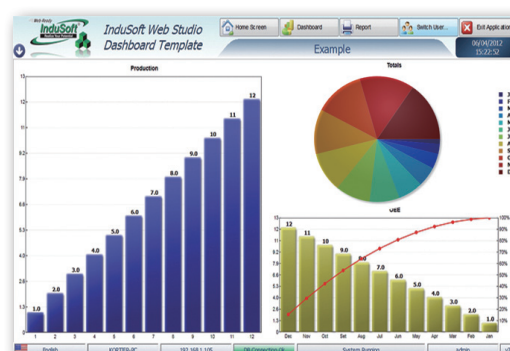
Alarms

In addition to the many alarm functions you expect from InduSoft Web Studio, v7.1 also sends online alarms or reports using multi-media formats like PDF. Alarms are real-time and historical; log data in binary format or to any database. Use remote notification to have alarms sent right to your inbox, printer, or smartphone! Custom Alarm fields allow you to customize up to 10 additional fields to the history of alarms.



Recipe / Report

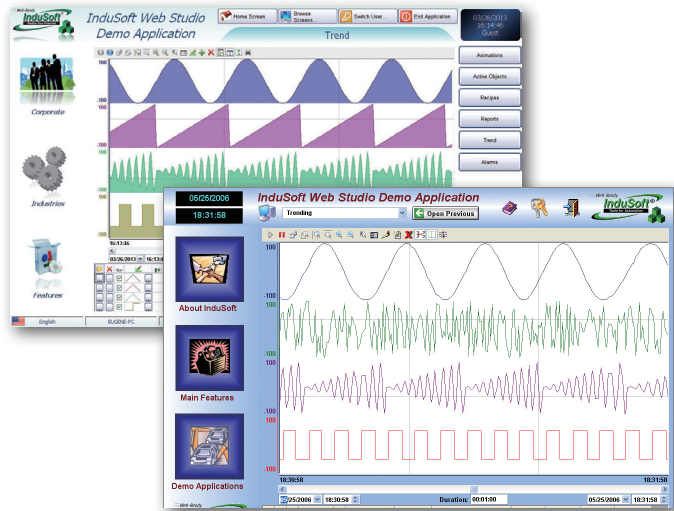
Save time and maintain consistency by automating part parameters or production quantities with flexible recipe management tools. Create clear, concise reports in plain text, RTF, XML, PDF, HTML, and CSV or integrate with Microsoft Office programs such as Excel. Get the data you need, in the format you need it, to make informed decisions, fast. InduSoft has also partnered with Ocean Data Systems to offer further reporting capabilities through Dream Report for InduSoft Web Studio, available as an add-on.





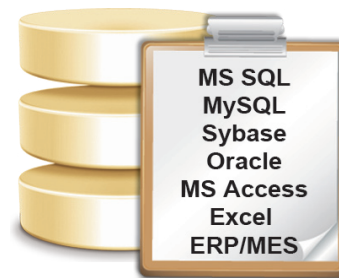
Trend

Real-time and Historical trends, and SPC functionality are supported. Log data in binary format. or to any local or remote SQL database. Color or fill trends with graphic elements to enhance clarity of data. Date/Time based or numeric (X/Y plot) trends give you the flexibility to display information that best suits your application. InduSoft Web Studio supports vertical and horizontal trending.



Database

Connect to any SQL database (MS SQL, MySQL, Sybase, Oracle), or MS Access or Excel, and ERP/MES systems (including SAP), even from Windows Embedded CE. InduSoft Web Studio is flexible, offering a built in interface that doesn't require knowledge of SQL (for trends, alarms/events, grid and other objects). Use any SQL statement you need, anywhere you need it.



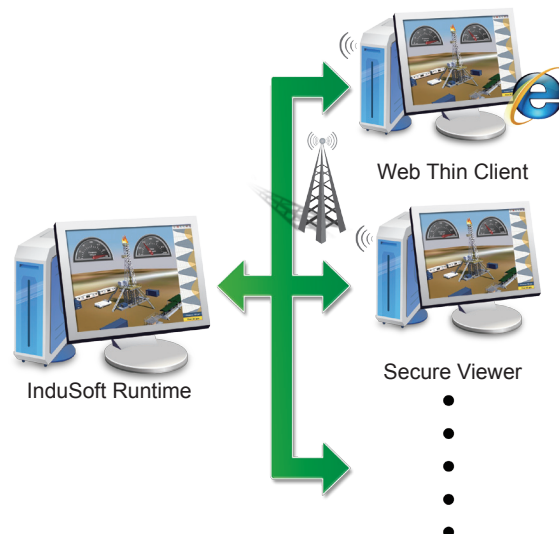
Driver / OPC

provides over 240 native communication drivers for PLCs, temperature controllers, motion controllers, bar code/2D/RFID readers, and many other devices. Use these built in drivers, or connect to an OPC server. InduSoft driver toolkits even allow you the flexibility to build your own drivers.

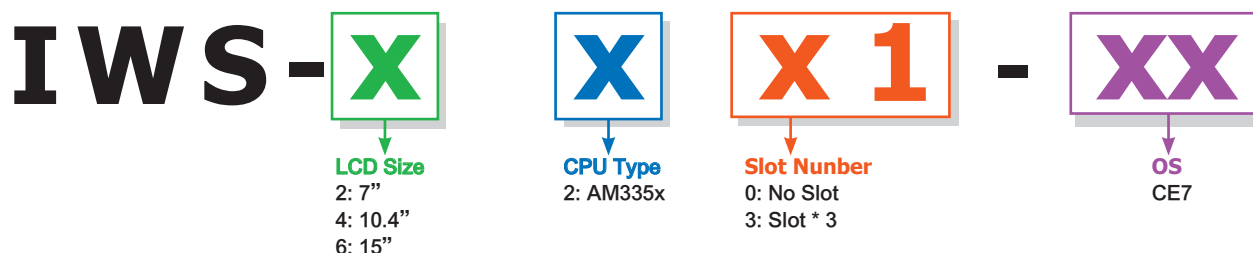


Thin Clients

Remotely view screens as web pages using Internet Explorer web browser, or InduSoft Secure Viewer. Without installing any additional software and provide embedded firewall, remote client command disabled and login authority functions to protect the system security.



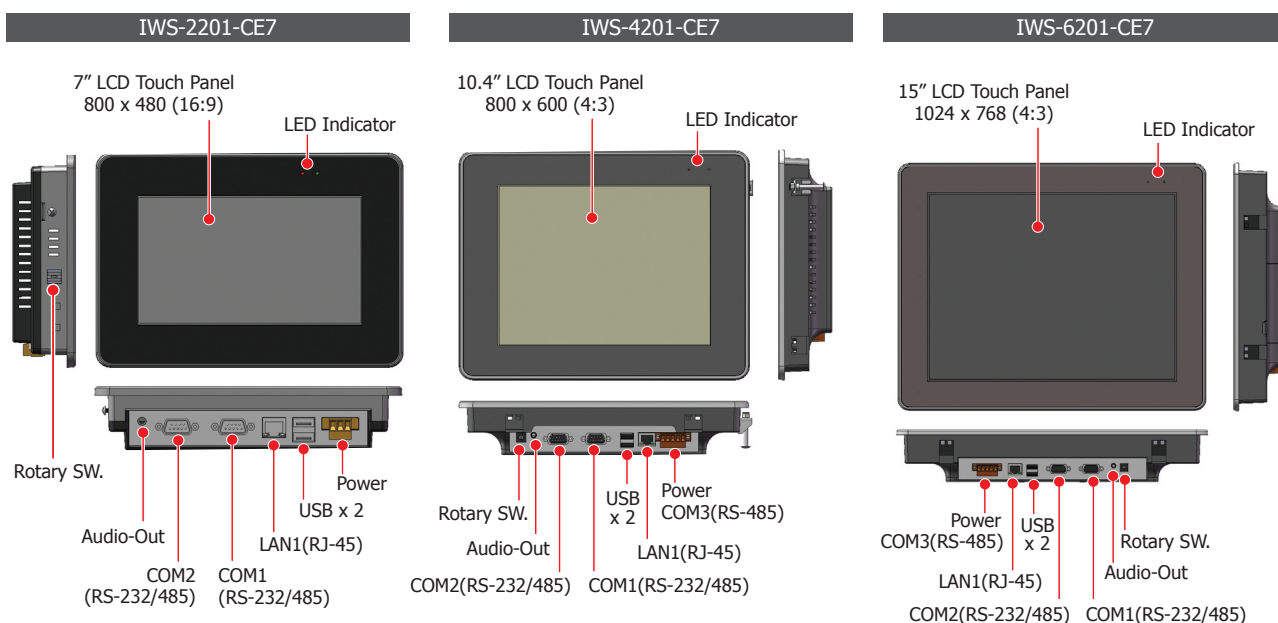
IWS PAC Selection Guide



Specifications

Models	IWS-2201-CE7	IWS-4201-CE7	IWS-6201-CE7
LCD Display			
Size	7" (16:9)	10.4" (4:3)	15" (4:3)
Resolution	800 x 480	800 x 600	1024 x 768
Brightness (cd/m2)	400		
Contrast Ratio	500 : 1		
LED Backlight Life (hrs)	20,000	50,000	
Touch Panel	4-wire, resistive type; light transmission: 80%	5-wire, resistive type; light transmission: 80%	
LED Indicator	2 (PWR, Run)		
CPU Module			
CPU	AM3352 (720 MHz)	AM3354 (1 GHz)	
SDRAM	512 MB		
MRAM	128 KB		
Flash	256 MB		
EEPROM	16 KB		
RTC (Real Time Clock)	Yes		
Hardware Serial Number	Yes, 64-bit Hardware Serial Number		
Rotary Switch	Yes (0~9)		
Audio	Earphone-out		
Communication Interface			
Ethernet	1x RJ-45, 10/100/1000 BaseTX		
USB 2.0 (host)	2		
COM1	RS-232/485(DB9 connector); 2500 Vdc isolated	RS-232/485 (DB9 connector); 2500 Vdc isolated	
COM2	RS-232/485 (DB9 connector); 2500 Vdc isolated		
COM3	-	RS-485 (Terminal Block, Data+, Data-); 2500 Vdc isolated	
Mechanical			
Dimensions (W x L x H) (mm)	213 x 148 x 44	293 x 231 x 54	381 x 305 x 65
Installation	Panel Mounting / VESA Mounting		
Ingress Protection	Front Panel: NEMA 4 /IP65		
Environment			
Operating Temperature	-10 ~ +60°C		
Storage Temperature	-20 ~ +70°C		
Ambient Relative Humidity	10 ~ 90% RH (non-condensing)		
Power			
Power from terminal block	Yes, 12~48 Vdc		
Power form PoE	Yes, IEEE 802.3at		
Isolation	-	1 kV	
Consumption	0.25A @ 24 Vdc	0.45A @ 24 Vdc	0.65A @ 24 Vdc

Appearance



Ordering Information

IWS-2201-CE7	InduSoft based PAC with 7" LCD (WinCE7 OS)
IWS-4201-CE7	InduSoft based PAC with 10.4" LCD (WinCE7 OS)
IWS-6201-CE7	InduSoft based PAC with 15" LCD (WinCE7 OS)

(default 300 tags, 3 drivers, 4 Web Thin Client, 1 Secure Viewer)

Windows Embedded CE Runtime

InduSoft-CE1500R	CEView Standard for Windows CE Run-time (1,500 Tags and 3 Drivers)
-------------------------	--

(includes one runtime license with 4 Web Thin Client, 1 Secure Viewer)

Additional Package

InduSoft-Web Upgrade	4 (default), 8
InduSoft-SV Upgrade	1 (default), 2, 4, 8

InduSoft Resources

InduSoft (ICP DAS)	http://www.icpdas.com/products/Software/InduSoft/indusoft.htm
InduSoft (Original)	http://www.indusoft.com/

Accessories

DIN-KA52F	24 V/1.04 A, 25 W Power Supply with DIN-Rail Mounting
MDR-20-24	24 V/1 A, 24 W Power Supply with DIN-Rail Mounting
CA-0950-3W	5.0 M 3-Pin Male to Female D-sub RS-232 Cable w/Ferrite Core