

PCDK-0001

PTZ, Hemispheric and Dome Camera Demo Kit



- Portable heavy duty travel suitcase with built-in camera demo kit
- Simulate both ceiling and wall installations on the desk
- Built-in High PoE power injector
- Support PTZ, Hemispheric and Dome Cameras
- Pre-installed Ethernet cable inside the mounting accessory
- Extra space in the suitcase for 1 camera

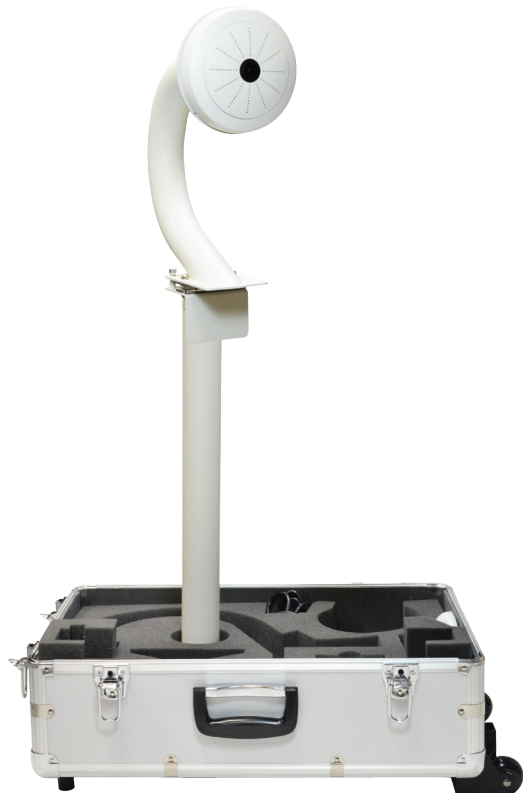
INDICATION

Camera Demo Kit is a portable heavy duty travel suitcase with built-in demo stand and related accessories for the purpose of doing the quick and convenient demonstration of the best features of PTZ, Hemispheric or Dome cameras. It is possible to simulate both ceiling and wall installations on the desk. There is one IEEE802.3at class PoE injector included in camera demo kit, supporting PoE class 1, 2, 3 and High PoE cameras.

CEILING INSTALLATION DEMO



WALL INSTALLATION DEMO



PCDK-0001

PRODUCT SPECIFICATION

PCDK-0001

• General

Device Type	Camera Demo Kit
Device Design	Heavy duty travel suitcase with 1 pair of wheels
Maximum Number of Cameras	1
Camera Orientation	Face forward, face down
Supported Camera Types	PTZ Camera, Hemispheric Camera, Dome Camera

• Mounting

Mounting Accessory	Built-in heavy duty mounting accessory set
--------------------	--

• Cabling

Camera Side Ethernet Port	1, pre-installed cable, Ethernet (10/100 Base-T), RJ-45 connector
PC Side Ethernet Port	1, pre-installed cable, Ethernet (10/100 Base-T), RJ-45 connector

• Power

Power Source	Built-in IEEE802.3at standard PoE injector, supporting PoE Class 1, 2, 3 and High PoE cameras
Input for Power Source	AC 100-240V, 0.8A
Power Consumption	According to camera's power consumption
Approvals	CE (EN 55022 Class B, EN 55024), FCC (Part15 Subpart B Class B)
Operating Temperature	0°C ~ 50°C (32°F ~ 122°F)
Operating Humidity	10% ~ 85% RH

• Hardware

Weight	7.9g (17.4 lb)
Dimensions (W x H x D)	560 mm x 360 mm x 230 mm (22" x 14.2" x 9.1")
Bundled Accessories	Universal connector kit for PoE injector (UK, Europe, USA); RJ-45 male type to female type converter; Screws for mounting equipment, Key to lock the suitcase
Reserved Space	Reserved space in the suitcase for 1 camera (camera not included in demo kit)

• Required Additional Items

Demo PC	One PC with pre-installed Internet Explorer browser (not included in demo kit)
Demo Display	To demonstrate the video quality of 2-Megapixel or higher resolution cameras, it is recommended to use 1080p resolution display (not included in demo kit)
Installation Tools	Phillips screwdriver (not included in demo kit)

• Supported Camera Models

PTZ Camera	KCM-8111
Hemispheric Camera	KCM-3911, KCM-7911
Dome Camera	D5x, E5x, D6x, E6x, D7x, E7x, D8x, E8x, KCM-7111, KCM-7311