

Q250

3MP Train Application In-Wall Box with D/N, Extreme WDR, SLLS, M12, Fixed Lens



- Train Application
- 3 Megapixel
- Day & Night with Superior Low Light Sensitivity
- Fixed Lens with f2.5mm/F2.2
- Extreme WDR
- Super wide angle
- Built-in Analytics
- Event trigger, response and notification

► Specifications

Device

| | |
|----------------------------------|--|
| Product Type | In-Wall Box |
| Maximum Resolution | 3MP |
| Product Application | Train Application |
| Application Environment | Outdoor |
| Image Sensor | Progressive Scan CMOS |
| Sensor Size | 1/2.8 " |
| Effective Pixels | 2065(H) X 1553(V) (3.21 MP) |
| Day / Night | Yes |
| Low Light Sensitivity | Superior |
| Minimum Illumination | Color: 0.1 lux at F2.2 (30 IRE , 2400 K); B/W: 0.05 lux at F2.2 (30 IRE, 2400 K) |
| Color to B/W Switch | ISP based switch, configurable |
| Mechanical IR Cut Filter | Yes |
| IR Sensitivity Range | 700-1100nm |
| IR LED | No |
| Electronic Shutter | 1/5-1/16000 second (manual mode); 1/5-1/16000 second (auto mode) |
| Horizontal Resolution (TV Lines) | 1300 TVL |

| | |
|-----------|-------|
| S/N Ratio | 56 dB |
|-----------|-------|

Lens

| | |
|--------------------------|---------------------|
| Focal Length | Fixed focal, f2.5mm |
| Aperture | F2.2 |
| Iris | Fixed iris |
| Focus | Fixed focus |
| Lens Mount | Board mount |
| Horizontal Viewing Angle | 108.6° |
| Vertical Viewing Angle | 82.1° |

Video

| | |
|-----------------------------------|---|
| Compression | H.264 (Baseline/ Main/ High profile), MJPEG |
| Maximum Frame Rate vs. Resolution | 30 fps at 2048 x 1536 60 fps at 1920 x 1080 60 fps at 1280 x 720 30 fps at 800 x 600 30 fps at 640 x 480 30 fps at 320 x 240 |
| Multi-Streaming | Simultaneous triple streams based on three configurations |
| Bit Rate | 128Kbps - 12Mbps (per stream) |
| Bit Rate Mode | Constant, Variable |
| Wide Dynamic Range | Extreme WDR (145 dB) |
| Image Enhancement | White Balance, Brightness, Contrast, Sharpness, Automatic gain control, Flickerless, Defogging |
| Digital Noise Reduction | 2D + 3D DNR |
| Privacy Mask | 4 configurable regions |
| Text Overlay | Yes |
| Built-in Analytics | Object Based Motion Detection, Tampering Detection, Shock Detection, Object Line Crossing Detection, Object Enter Area Detection, Missing Object Detection, Unattended Object Detection, Object Loitering Detection |
| Server-based Analytics | Object Line Counting, People Counting, Face Detection, Object Based Motion Detection, Tamper, Object Line Crossing Detection, Object Enter Area Detection, Missing Object Detection, Unattended Object Detection, Smoke Detection, Heat Map, Dwell Time, Direction Detection, Automatic License Plate Recognition, People Queue Detection, (Require PC-based or standalone IVS or ALPR Server. Contact ACTi support for recommendations on how to maximize analytical accuracy) |
| Image Orientation | Flip, Mirror |
| IVS performance | Certain algorithms may require more computing power, which may limit the number of algorithms that can be concurrently used in the camera. Please test the actual performance before using in a project. |

Audio

| | |
|-------------------|--|
| Audio Type | 1-way, Built-in Microphone |
| Audio Compression | 8 kHz, 16 bit encoding, Mono, PCM, G.711 |

Network

| | |
|----------------------------|---|
| Network Protocol & Service | IPv4/v6, TCP, UDP, DHCP, PPPoE, HTTP, HTTPS, DNS, DDNS, NTP, RTP, RTSP, RTCP, SMTP, FTP, IGMP, ICMP, ARP, Bonjour, UPnP, QoS, SNMP, IEEE 802.1X |
| Ethernet Port | 1 x M12 connector (female, D-coding, 4-pin, PoE Type A) |
| Security | IP address filtering, HTTPS encryption, Password protected user level, Anonymous login, IEEE 802.1X network access control |

Video Analytics

| | |
|----------------------|----------|
| Analysis Source Type | Video |
| Metadata Accuracy | Standard |

Event

| | |
|----------------|---|
| Event Trigger | Video motion detection (10 regions), External device through digital input, Sound detection, Intelligent event detection |
| Event Response | Notify control center, Change camera settings, Command other devices, E-mail notification with snapshots, Push notification to mobile device, Save video to local storage, Save video or snapshot to local storage, Upload video to NVR server, Upload video or snapshot to FTP server, Activate external device through digital output |

Integration

| | |
|-----------------------|--|
| Unified Solution | Fully compatible with ACTi software |
| GPS Position | Manual setting |
| ONVIF Compliant | Yes, Profile S, Profile G |
| GB28181 Compliant | Yes |
| Web Browser | IE 11 or newer, Firefox with VLC, Chrome with VLC, Safari with QuickTime |
| Auto Firmware Upgrade | Yes |

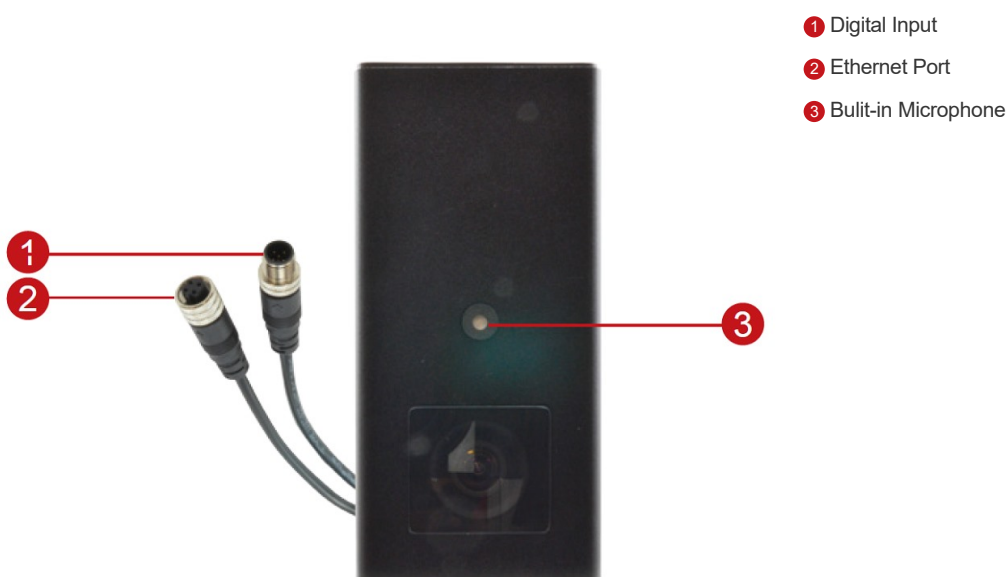
Interface

| | |
|----------------------|---|
| Local Storage | MicroSDHC, MicroSDXC memory card slot (card not included) |
| Digital Input/Output | 1/0 |

General

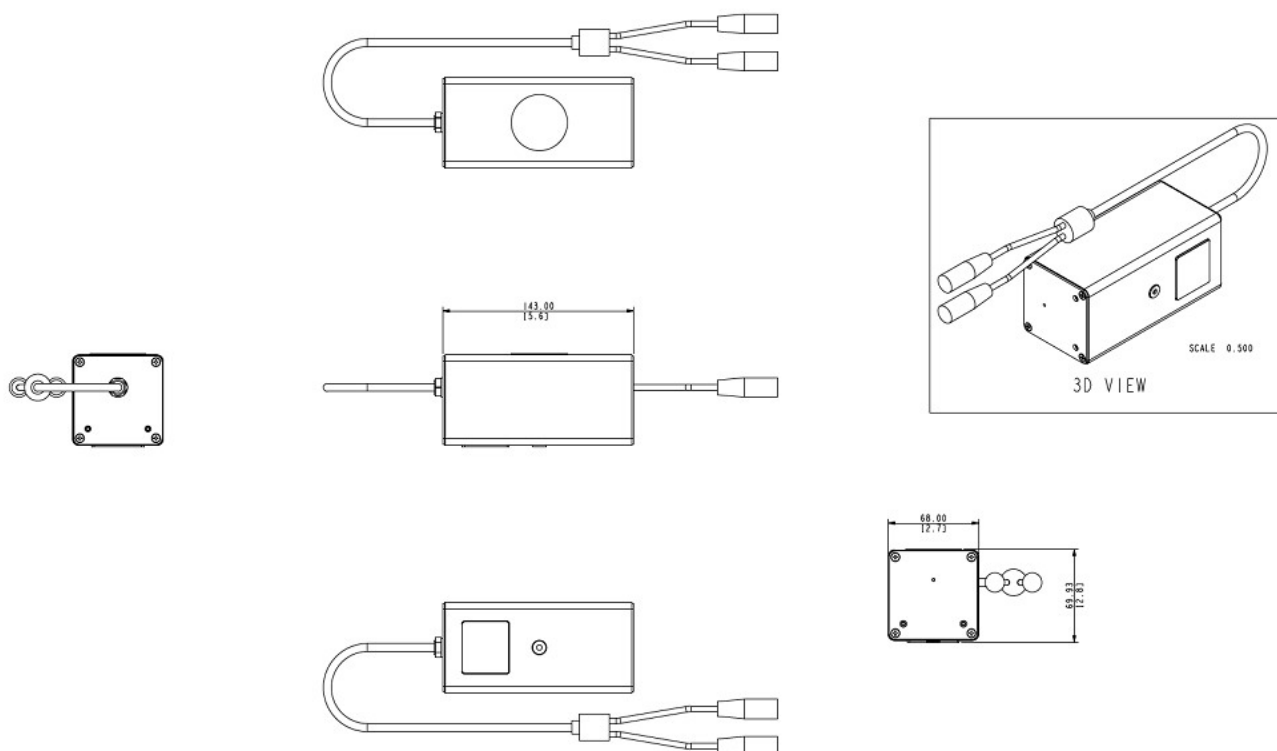
| | |
|-----------------------|--|
| Power Source | PoE Class 2 (IEEE802.3af) |
| Power Consumption | 6.49 W (PoE) |
| Environmental Casing | Weatherproof (IP68), Vandal proof metal casing (IK10), Vibration proof (IEC60571), Built-in dehumidifier |
| Mount Type | Surface, Wall Mount |
| Dehumidifier | Yes |
| Starting Temperature | -40°C ~ 55°C (-40°F ~ 131°F) |
| Operating Temperature | -40°C ~ 55°C (-40°F ~ 131°F) |
| Approvals | CE, FCC, IP68, NEMA 4X, IK10 (metal casing), IEC60571, UL Listed (UL 60950-1) |
| Warranty | 3 Year(s) |

► Photo Indication



- 1 Digital Input
- 2 Ethernet Port
- 3 Built-in Microphone

► Dimension Diagram



Unit: mm [inch]

► Related Products

Network & Storage Peripherals - Data Switch

PPSW-0102



PLANET FGSD-1011HP 8-Port 802.3at PoE Switch (PoE Budget 120W)

Extenders - PoE Extender

PPEX-0100



Veracity OUTREACH Max Power over Ethernet (PoE) Extender

Extenders - PoE over Coaxial Extender Kit

PPOC-0100



Planet LRP-101C-KIT Power over Coax Adapter Kit

Installation Support - Camera Installation Kit

PMON-1001-010



Camera Installation Kit for use with iOS Device with belt bag, battery and charger (US, AC 110~240V)

PMON-1001-011



Camera Installation Kit for use with iOS Device with belt bag, battery and charger (Europe, AC 110~240V)