

Quick Start Guide for μPAC-5000 Series

April 2010, Version 1.0.1

Congratulations!

Congratulations on purchasing μPAC-5000 - the most popular automation solution for remote monitoring and control application. This Quick Start Guide will provide information needed to get started with μPAC-5000. Please also consult the User Manual for detailed information on the setup and use of μPAC-5000.

What's In the Box?

In addition to this guide, the package includes the following items:



μPAC-5000



Software Utility CD



RS-232 cable
(CA-0910)



Screw Driver
(1C016)

Technical Support

- **μPAC-5000 User Manual**

CD:\NAPDOS\NAPDOS\upac-5000\Document\

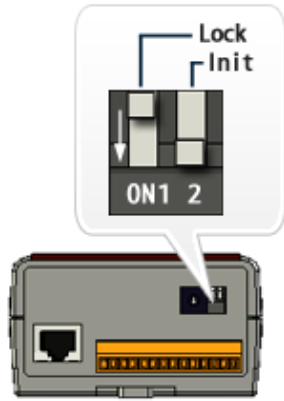
<http://ftp.icpdas.com/pub/cd/8000cd/napdos/upac-5000/document/>

- **μPAC-5000 Website**

<http://www.icpdas.com/products/PAC/up-5000/introduction.htm>

- **ICP DAS Website**

<http://www.icpdas.com/>

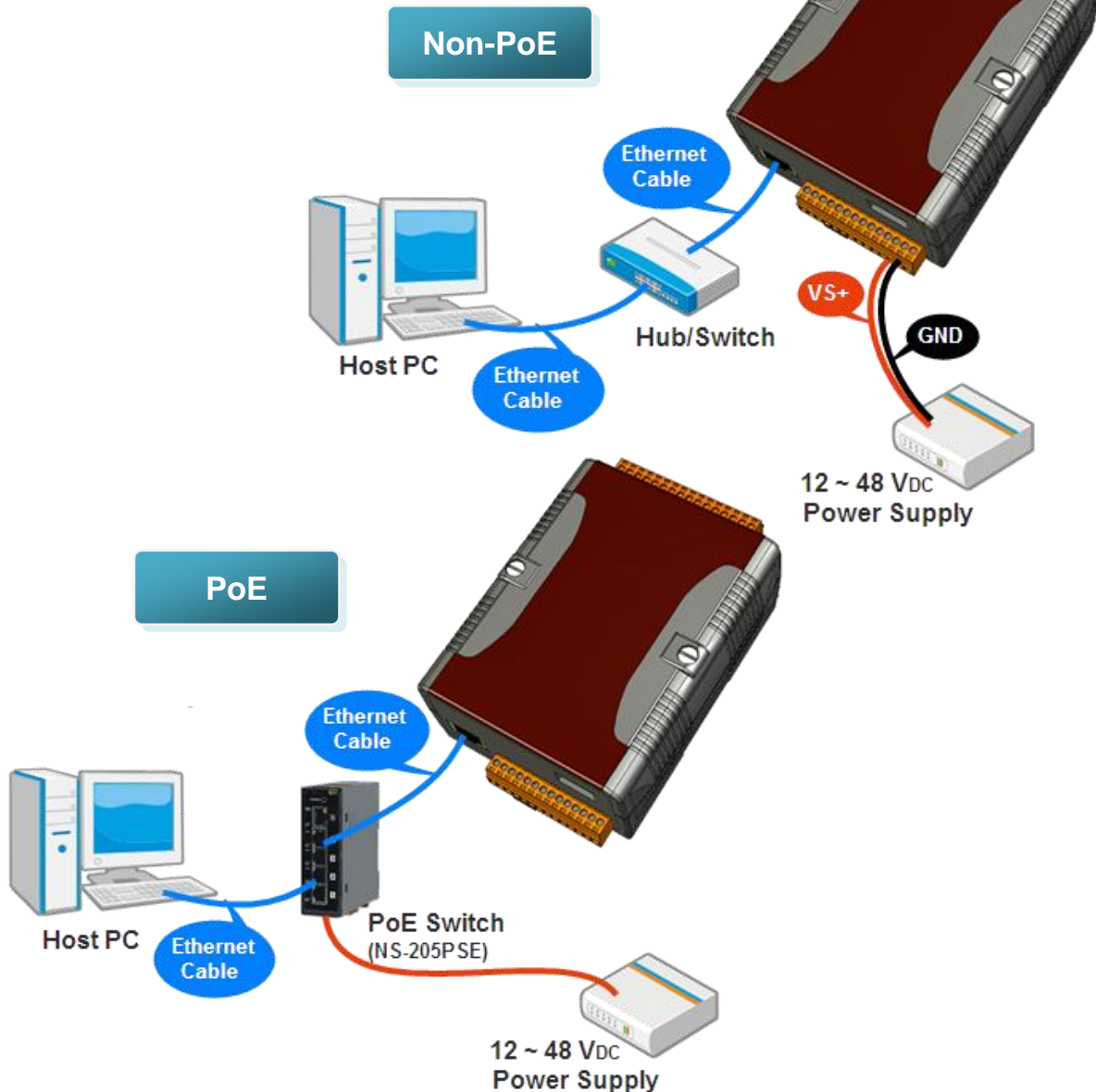


1 Configuring Boot Mode

Make sure the switch of the Lock is placed in the “OFF” position, and the switch of the Init is placed in the “ON” position.

2 Connecting to PC, Network and Power

The μPAC-5000 is equipped with an RJ-45 Ethernet port for connection to an Ethernet hub/switch and PC. You can also link directly the μPAC-5000 to PC with an Ethernet cable.



3 Installing the MiniOS7 Utility

Step 1: Get the MiniOS7 Utility tool

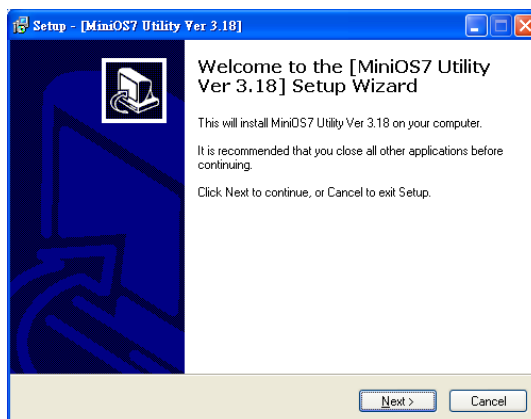


The MiniOS7 Utility can be obtained from companion CD or our FTP site:
CD:\Napdos\minios7\utility\minios7_utility\
ftp://ftp.icpdas.com/pub/cd/8000cd/napdos/minios7/utility/minios7_utility/

Step 2: Follow the prompts to complete the installation



After the installation has been completed, there will be a new short-cut for MiniOS7 Utility on the desktop.



4 Using MiniOS7 Utility to Assign a New IP

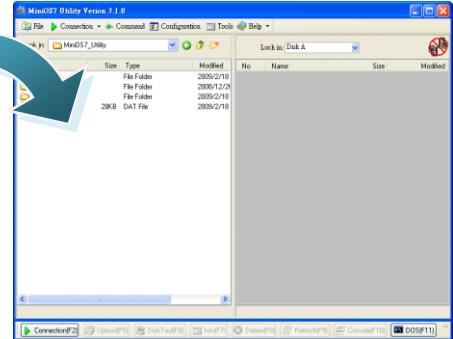
The μ PAC-5000 are Ethernet devices, which comes with a default IP address, therefore, you must first assign a new IP address to the μ PAC-5000.

The factory default IP settings are as follows:

Item	Default
IP Address	192.168.255.1
Subnet Mask	255.255.0.0
Gateway	192.168.0.1

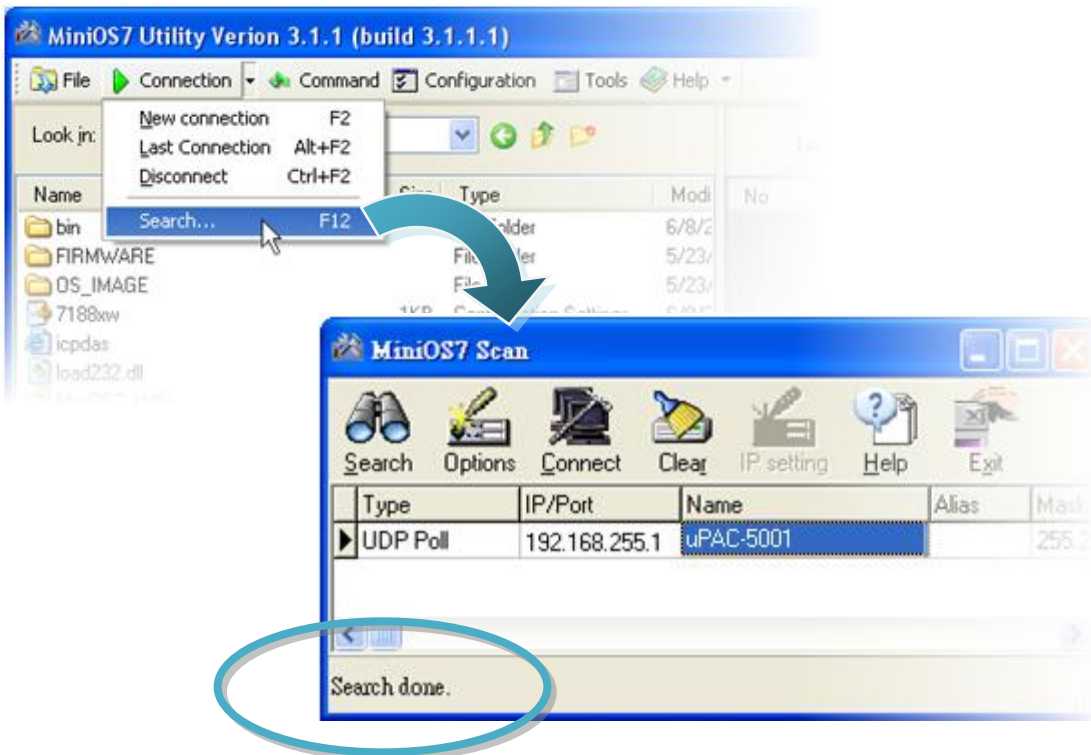
Step 1: Run the MiniOS7 Utility

Double-click the MiniOS7 Utility shortcut on your desktop.



Step 2: Press "F12" or choose "Search" from the "Connection" menu

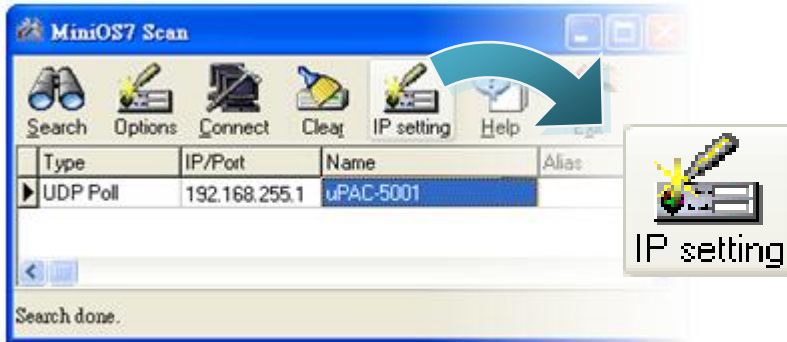
After pressing F12 or choosing Search from Connection menu, the MiniOS7 Scan dialog will appear, that will display a list of all the MiniOS7 modules on your network.



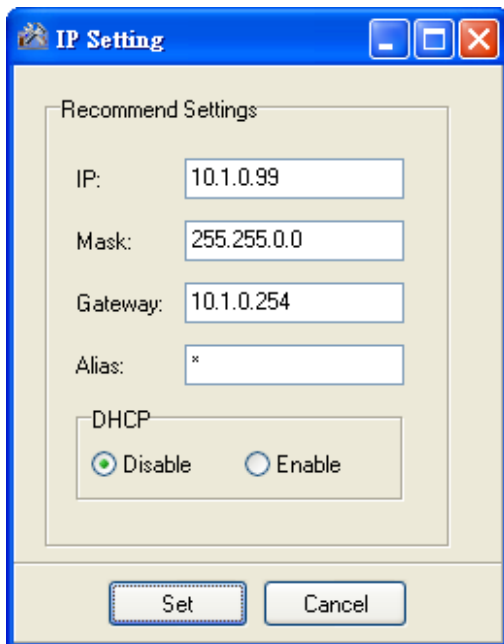
See the status tip, waiting for the search to be done.

Step 3: Choose the module name and then choose “IP setting” from the toolbar

Choose the module name for fields in the list, and then choose IP setting from the toolbar.

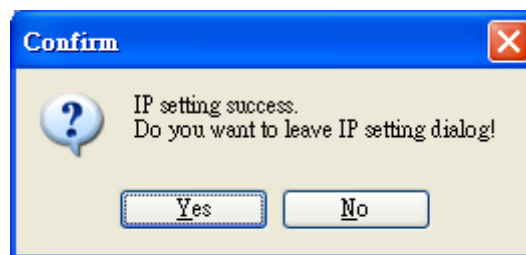


Step 4: Assign a new IP address and then choose “Set” button



Step 5: Choose “Yes” button

After completing the settings, press the Yes button in the Confirm dialog box to exit the procedure.



Don't close this application. You need to use it to download files into μ PAC-7186E.

5 Using MiniOS7 Utility to upload firmware into module

A number of demo programs are available with μ PAC-5000, which can be obtained from:

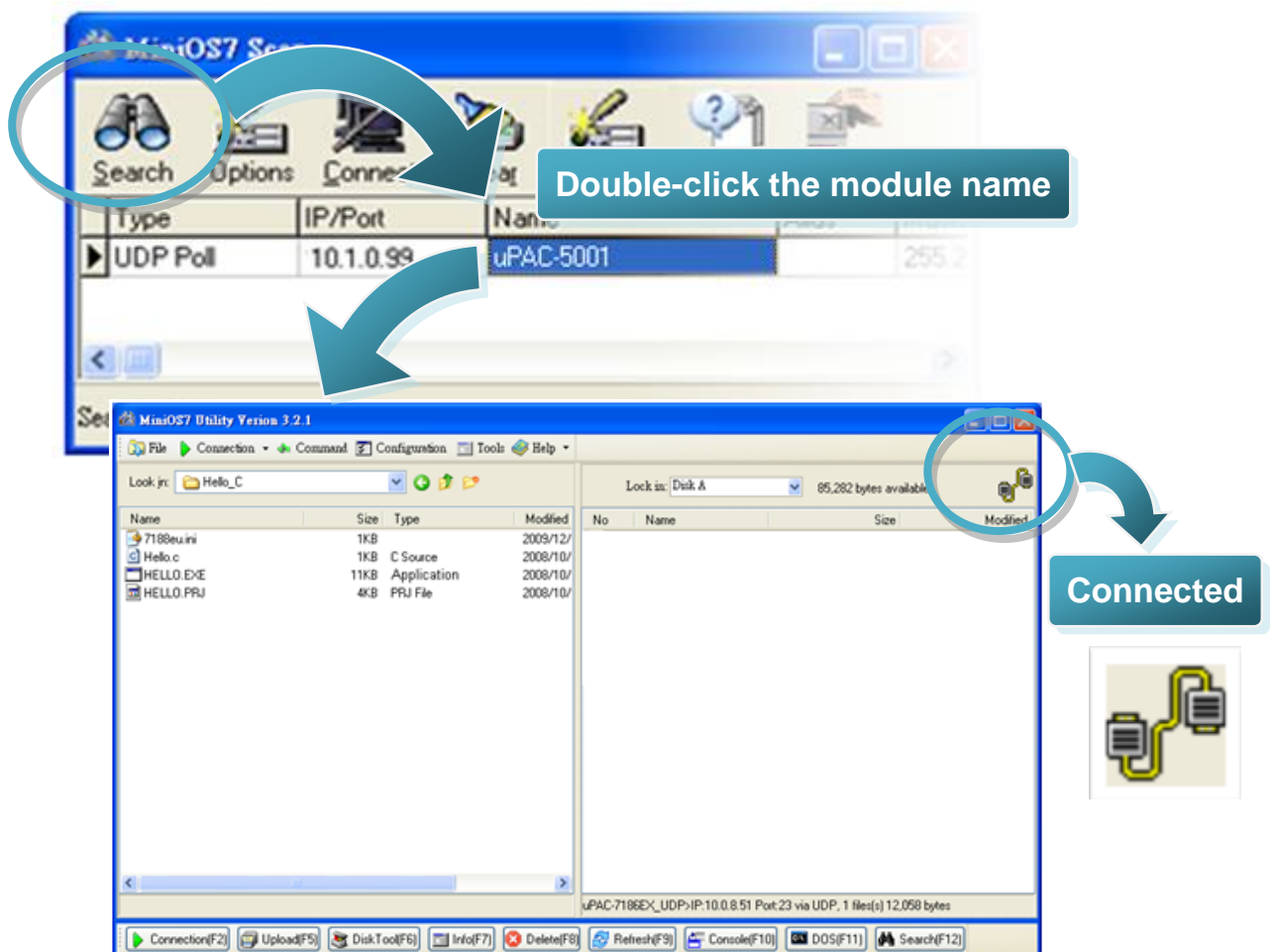
CD:\Napdos\upac-5000\Demo\

<http://ftp.icpdas.com/pub/cd/8000cd/napdos/upac-5000/demo/>

And before downloading the programs, you must first establish a connection between the Host PC and the μ PAC-5000.

Step 1: Press “Search” from the toolbar and then double-click the module name

After pressing Search from the toolbar, the MiniOS7 Scan dialog will display a list of all the MiniOS7 modules on your network. Then double-click the module name to establish a connection between PC and μ PAC-5000.



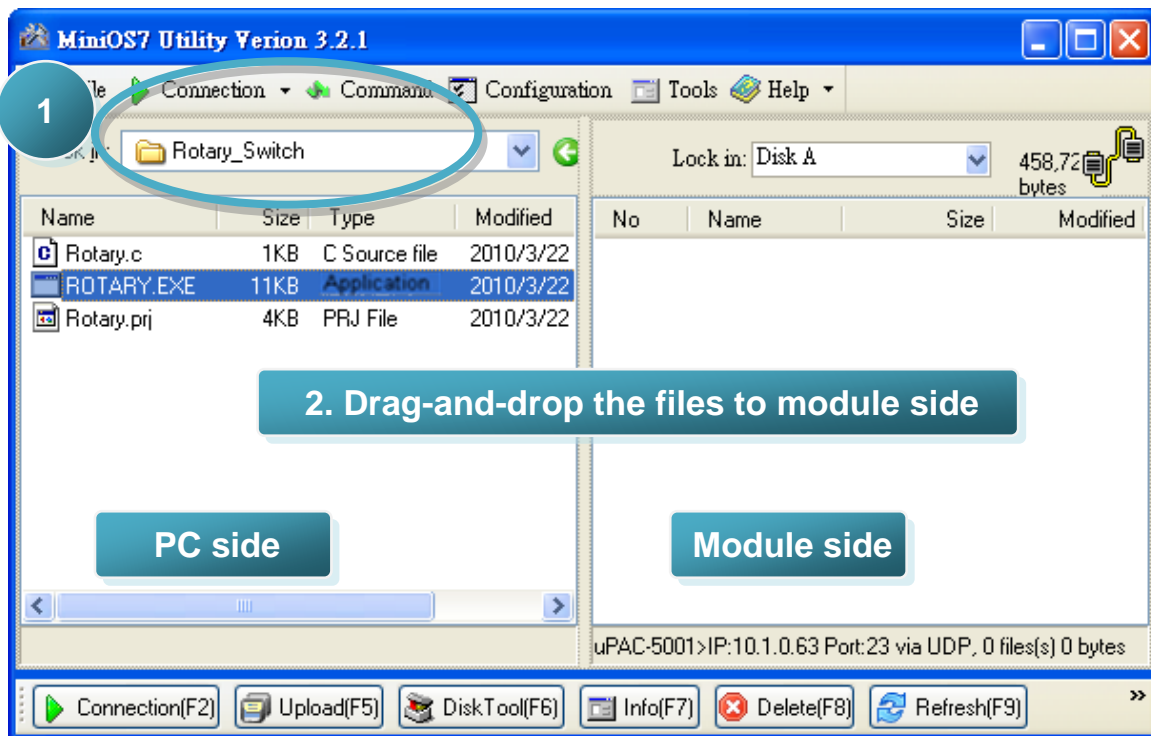
Step2: Click the “Look in” pull-down menu to locate the firmware (*.exe) and then drag-and-drop the file(s) from the PC side to the module side

After the connection is established, click the “Look in” pull-down menu to locate the firmware (*.exe), then drag-and-drop the file(s) from PC side to the module side.

Here we illustrate the firmware upload procedure with using “Rotary_Switch.exe” as example, which can be obtained from:

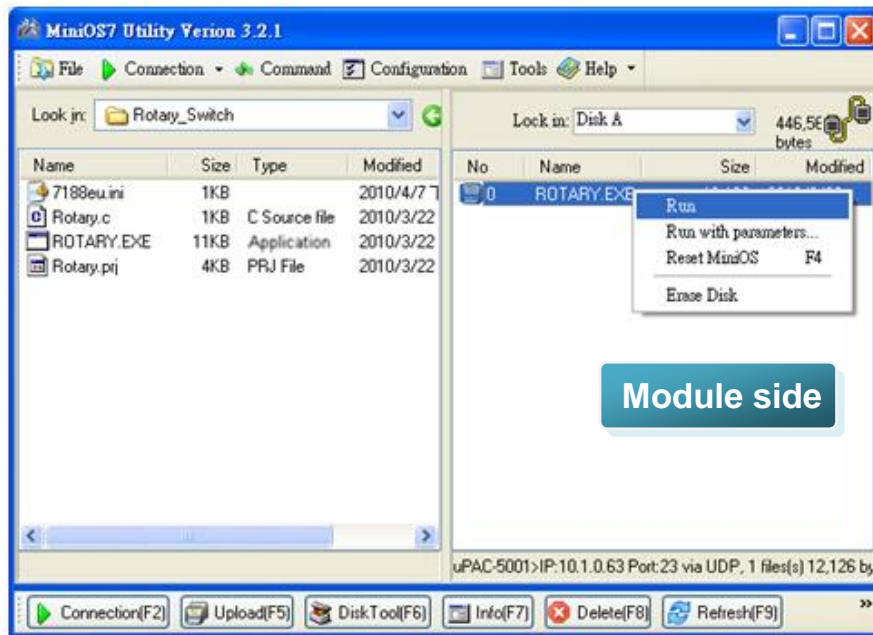
CD:\Napdos\upac-5000\Demo\basic\MISC\Rotary_Switch\

http://ftp.icpdas.com/pub/cd/8000cd/napdos/upac-5000/demo/basic/misc/rotary_switch/



Step 3: Right-click the ROTARY.exe in module side and select “Run” to run the firmware

After the ROTARY.exe file has been downloaded to the μ PAC-5000, right-click the ROTARY.exe file in module side and select “Run” to run the firmware.



The ROTARY.exe will run in the module and print message to 7188eU.exe (installed with MiniOS7 Utility setup) as below:

